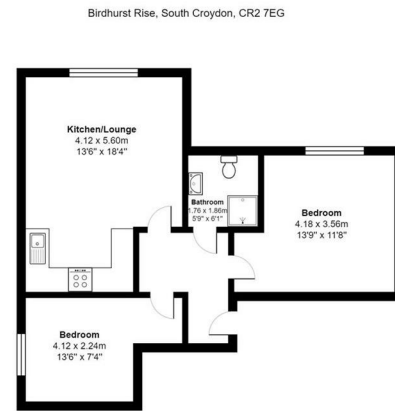


Floor Plan



All measurements are approximate and for display purposes only

For illustration purposes only



All dimensions and measurements are approximate and for guidance only.

Just Centro's Opinion...

A beautifully presented two-bedroom conversion apartment located in South Croydon and walking distance to South Croydon Station.

Offered in fantastic condition and newly decorated this contemporary apartment comprises two double bedrooms, an open plan living with modern kitchen and a stylish walk-in shower room with WC.

Located conveniently for the every-day London commuter, the apartment is walking distance to both South Croydon and East Croydon Rail Stations as well as Lloyd Park Tram Stop, serving direct fast links into Central London.

Offered unfurnished and available in July, viewings are highly recommended.

Additional Photos

