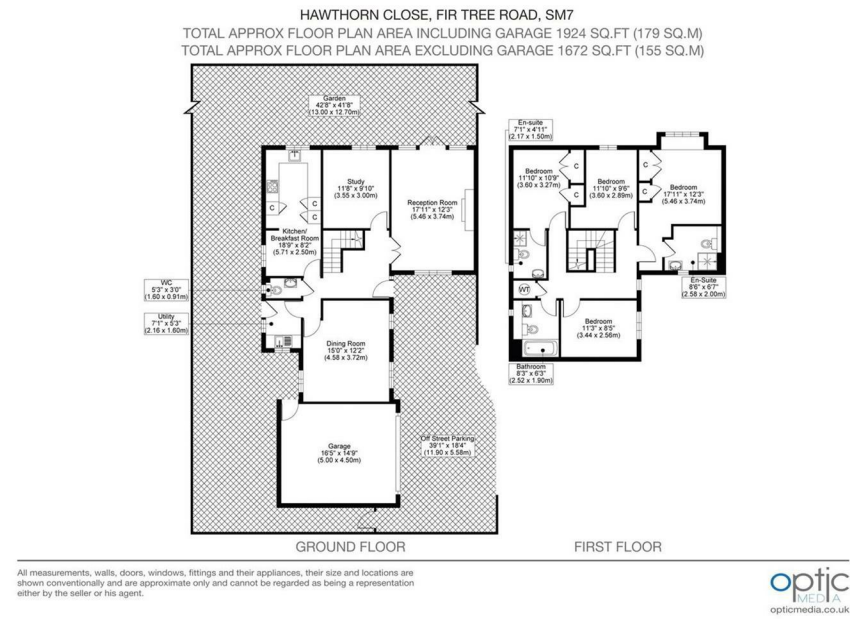


Floor Plan



For illustration purposes only



All dimensions and measurements are approximate and for guidance only.

Just Centro's Opinion...

Located in the private cul-de-sac Hawthorn Close, Banstead, this stunning detached house offers an exceptional living experience for families and professionals alike. Recently refurbished throughout, the property boasts a modern and stylish interior that is both inviting and functional.

With five spacious bedrooms, there is ample room for everyone to enjoy their own private space. The three well-appointed bathrooms ensure convenience for busy mornings and family life. The two reception rooms provide versatile areas for relaxation and entertainment, making it easy to host gatherings or enjoy quiet evenings at home.

The property features a large double garage and driveway parking, enhancing the appeal of this lovely home.

Location is key, and this property is ideally situated within walking distance to Banstead Station and other local transport links. Additionally, the charming Banstead Village is nearby, offering a variety of shops, cafes, and amenities to cater to your everyday needs.

This delightful home combines modern living with a peaceful setting, making it a perfect choice for those seeking comfort and convenience in Banstead. Don't miss the opportunity to make this exceptional property your new home.

Additional Photos

