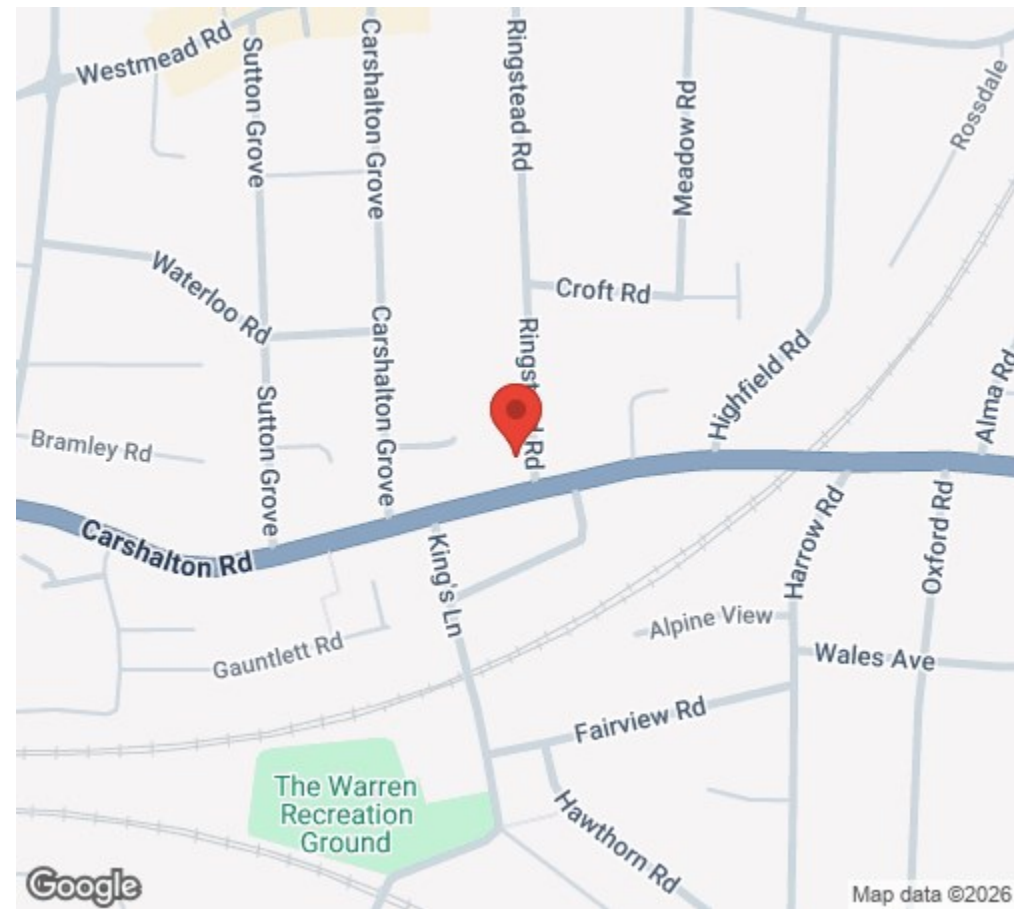


Location

From Sutton mainline train station head in a northerly direction and join the A232. Continue around the one way system and head right to continue on the A232 Carshalton Road. Follow the road along and take the eighth turning on the left into Ringstead Road. Yeoman Court can be located on the left hand side.

Location Map



£1,300 Per Month - 1st April 2026
Ringstead Road, Sutton, Surrey SM1 4SG



Description

- Mansion Block
- Ground Floor
- One Bedroom
- Spacious Lounge
- Modern Kitchen
- Garage
- Council Tax Band : C
- EPC Rating : D

Features

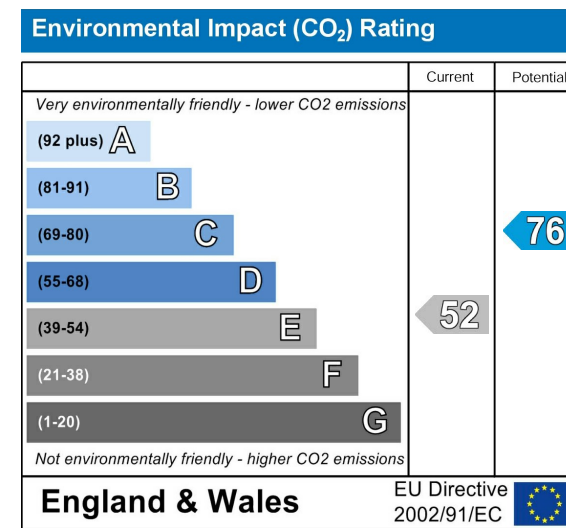
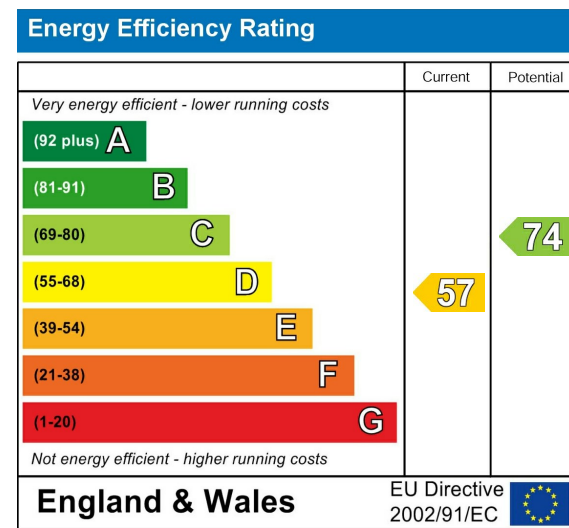
- Gas central heating
- Double glazing
- Security entry phone system

What you need to know

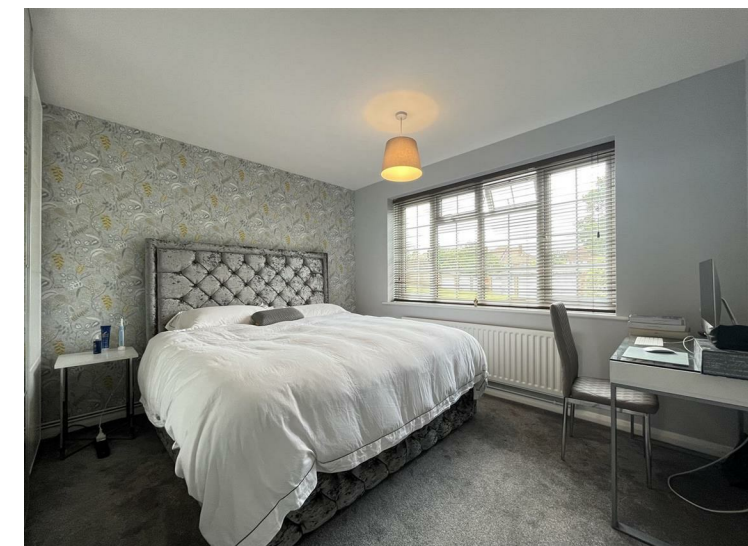
- Term: 12 months
- Rent: £1300pcm exclusive of bills
- Security deposit: £1500.00
- Energy rating: D
- Council Tax Band C



EPC Graph



Additional Photos



Just Centro's Opinion...

A spacious and bright one double bedroom apartment with Garage located along Ringstead Road in Sutton.

This ground floor apartment boasts a spacious lounge with living and dining area, one large double bedroom, a modern fitted kitchen and stylish bathroom.

Other benefits include Garage, free on-street parking, double glazing, gas central heating, storage space and neutral decor.

The property is within walking distance of Sutton mainline train station and town centre.

Available to view now, viewings are highly recommended.

Important Note

Centro Residential Sales and Lettings limited have not tested any services, heating system, electrical system, appliances, fixtures and fittings, that may be included in this property and would advise interested parties to satisfy themselves as to their condition or investigating the presence of any deleterious materials.

Viewing: Strictly by appointment through:

CENTRO RESIDENTIAL SALES AND LETTINGS LIMITED

Tel: 020 8401 5000

E-mail: residential@centro.plc.uk

See a selection of our properties at www.centro.plc.uk