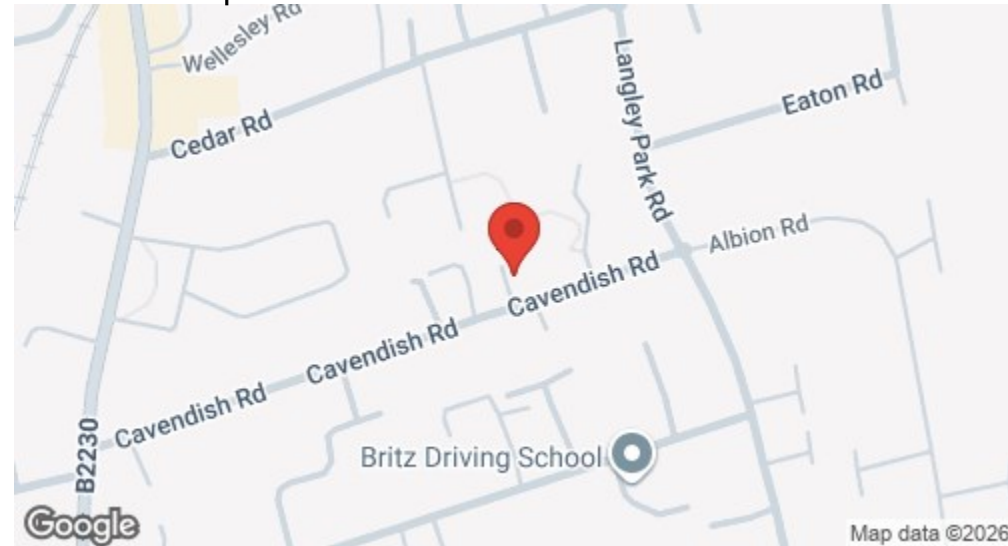


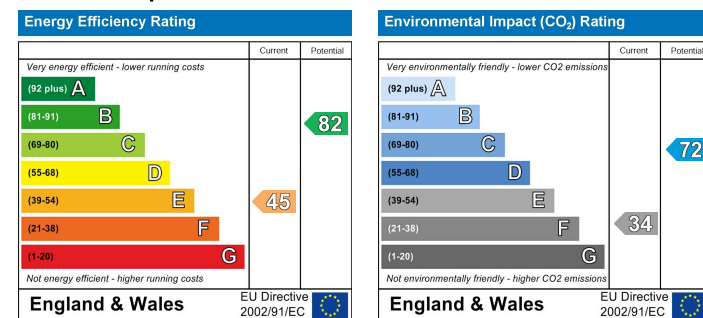
Location

From Sutton mainline railway station travelling in a southerly direction head along the Brighton Road. Take the fourth turning on the left into Cavendish Road, the property is at the end of the road on the left hand side.

Location Map



EPC Graph



Important Note

Centro Residential Sales and Lettings limited have not tested any services, heating system, electrical system, appliances, fixtures and fittings, that may be included in this property and would advise interested parties to satisfy themselves as to their condition or investigating the presence of any deleterious materials.

Viewing: Strictly by appointment through:

CENTRO RESIDENTIAL SALES AND LETTINGS LIMITED

Tel: 020 8401 5000

E-mail: residential@centro.plc.uk

See a selection of our properties at www.centro.plc.uk

£1,100 Per Month - 2nd March 2026

Cavendish Road, Sutton, Surrey SM2 5EY



Description

- Studio apartment
- First floor
- New Kitchen
- New Bathroom
- Spacious Living
- Allocated Parking
- Great Location
- Furnished
- Single Occupant

Features

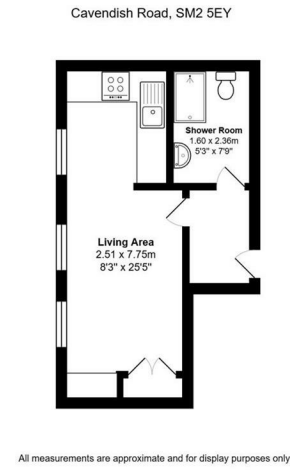
- Double glazing
- Off street parking
- Electric heating

What you need to know

- Term: 12 months
- Rent: £1100pcm exclusive of bills
- Security deposit: £1269.00
- Council tax: B
- Energy rating: D



Floor Plan



For illustration purposes only



All dimensions and measurements are approximate and for guidance only.

Just Centro's Opinion...

Centro is pleased to present this first-floor studio apartment on Cavendish Road, Sutton.

The property comprises an entrance hallway leading to a bright open-plan living space with defined sleeping, living and dining areas. The brand-new kitchen is fitted with a fridge, washing machine, cooker and induction hob.

There is a stylish newly installed shower room. The apartment also benefits from electric heating and double glazing.

Further features include one allocated off-street parking space. Offered furnished.

Conveniently located close to local amenities and transport links.

Suitable for a single applicant. Available to view now.

Additional Photos

