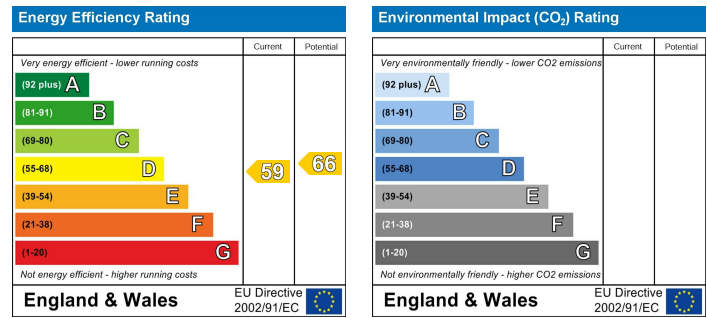


Location

Location Map



EPC Graph



Important Note

Centro Residential Sales and Lettings limited have not tested any services, heating system, electrical system, appliances, fixtures and fittings, that may be included in this property and would advise interested parties to satisfy themselves as to their condition or investigating the presence of any deleterious materials.

Viewing: Strictly by appointment through:

CENTRO RESIDENTIAL SALES AND LETTINGS LIMITED

Tel: 020 8401 5000

E-mail: residential@centro.plc.uk

See a selection of our properties at www.centro.plc.uk

£1,700 Per Month - 2nd February 2026

High Street, Sutton, Surrey SM3 8RT



Description

- Mansion Block
- Ground Floor
- Two Bedrooms
- Spacious Living
- Modern Kitchen
- Stylish Shower Room
- Allocated Parking
- Great Location
- EPC Rating D
- Council Tax Band C

Features

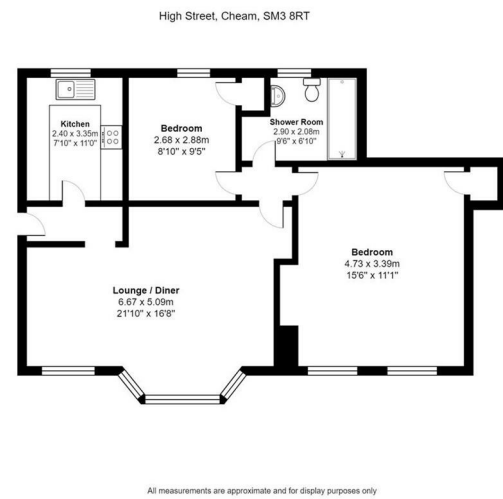
- Gas Central Heating
- Double Glazing
- Laminate Flooring

What you need to know

- Term: 12 months
- Rent: £1700pcm exclusive of bills
- Security deposit: £1961.00
- Council Tax Band C
- Energy Rating: D



Floor Plan



For illustration purposes only



All dimensions and measurements are approximate and for guidance only.

Just Centro's Opinion...

Boasting a convenient village location this brilliant two bedroom mansion apartment with residents parking ideally situated for Cheam Station.

The lovely apartment is situated on the ground floor of a mansion block. The apartment comprises of one large double bedroom, one smaller double bedroom, a large reception room with living and dining space, a separate modern kitchen and a stylish shower-room,

The property boasts an unrivalled location as it is situated at the top of the ever-desirable Cheam Village. Cheam Village benefits from fantastic transport links with Cheam Railway Station providing direct services in to London Bridge and London Victoria. Cheam Village also hosts an array of Restaurants and Shops that will all be within walking distance of this fantastic apartment.

Offered unfurnished and available to view now. Viewings are highly recommended.

Additional Photos

