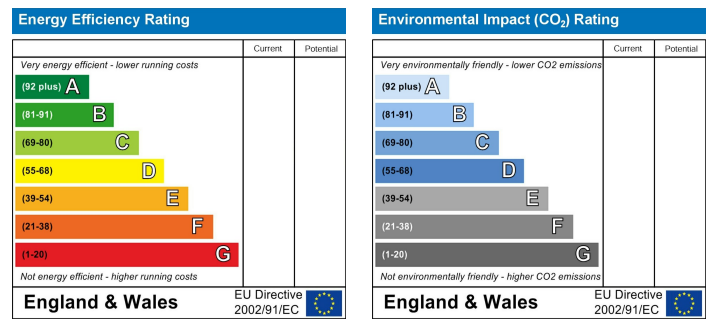


Location

Location Map



EPC Graph



Important Note

Centro Residential Sales and Lettings limited have not tested any services, heating system, electrical system, appliances, fixtures and fittings, that may be included in this property and would advise interested parties to satisfy themselves as to their condition or investigating the presence of any deleterious materials.

Viewing: Strictly by appointment through:

CENTRO RESIDENTIAL SALES AND LETTINGS LIMITED

Tel: 020 8401 5000

E-mail: residential@centro.plc.uk

See a selection of our properties at www.centro.plc.uk

£1,650 Per Month - 8th December 2025

Brighton Road, Sutton, SM2 5TR



Description

- Two Double Bedrooms
- Modern Kitchen
- Spacious Lounge
- Second Floor
- Garage
- Communal Gardens
- Unfurnished
- Great Location
- EPC Rating C
- Council Band C

Features

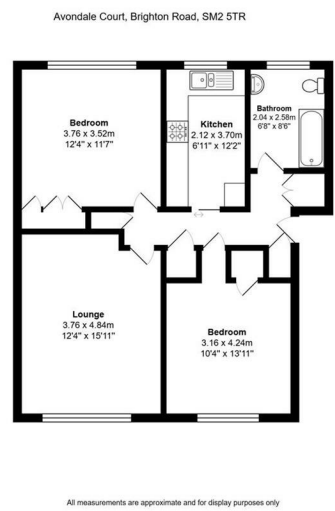
- Gas Central Heating
- Double Glazing
- Garage

What you need to know

- Term: 12 months
- Rent: £16500pcm exclusive of bills
- Security deposit: £1903.00
- Council Tax Band C
- Energy Rating: C



Floor Plan



For illustration purposes only



All dimensions and measurements are approximate and for guidance only.

Just Centro's Opinion...

Beautifully Presented & Spacious Top-Floor Two-Bedroom Apartment

This bright and generously sized top-floor flat is located in the highly sought-after South Sutton area, perfectly positioned close to excellent rail and bus links as well as a selection of well-regarded local schools. Please note: there is no lift in the building.

The property benefits from double glazing and gas central heating throughout, providing comfort all year round. It also comes with the added advantage of a private garage, ideal for secure parking or additional storage.

Offered unfurnished, this apartment is ideally suited to professionals or a small family. The accommodation comprises two spacious bedrooms and a modern family bathroom, with a layout that makes the most of the light and space available.

With secure parking and an EPC rating of C, this apartment combines convenience, comfort, and style.

Additional Photos

