

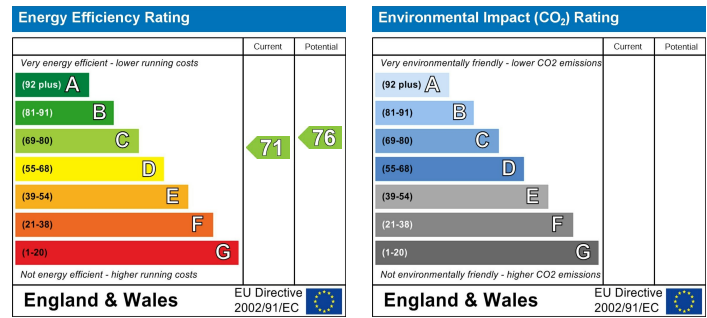
Location

£1,600 Per Month - 22nd August 2025
Cheam Road, Sutton, SM1 2TL

Location Map



EPC Graph



Important Note

Centro Residential Sales and Lettings limited have not tested any services, heating system, electrical system, appliances, fixtures and fittings, that may be included in this property and would advise interested parties to satisfy themselves as to their condition or investigating the presence of any deleterious materials.

Viewing: Strictly by appointment through:

CENTRO RESIDENTIAL SALES AND LETTINGS LIMITED

Tel: 020 8401 5000

E-mail: residential@centro.plc.uk

See a selection of our properties at www.centro.plc.uk



Description

- Ground Floor
- Two Bedrooms
- Recently Decorated
- Garage
- Available Now
- Unfurnished
- EPC Rating : C
- Council Tax Band : C

Features

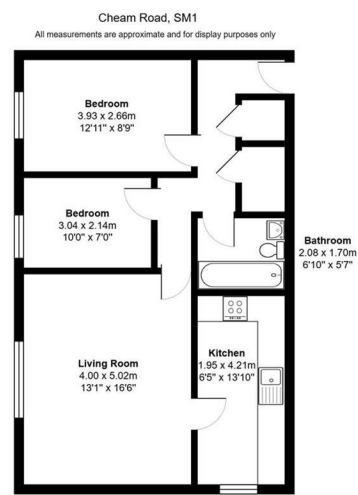
- Gas Central Heating
- Double Glazing
- Neutral Decor Throughout

What you need to know

- Term: 12 months
- Rent: £1600pcm exclusive of bills
- Security deposit: £1846.00
- Council Tax Band: C
- Energy Rating: C



Floor Plan



For illustration purposes only



All dimensions and measurements are approximate and for guidance only.

Just Centro's Opinion...

Located on Cheam Road in Sutton, this charming ground floor apartment offers a delightful living experience. With two well-proportioned bedrooms, this property is perfect for small families, couples, or individuals seeking a comfortable home. The apartment features also a spacious reception room, kitchen with appliances and has been recently decorated.

One of the standout features of this property is the convenience of a garage, offering secure parking and additional storage space. The location is particularly advantageous, as it is situated close to Sutton mainline station, making commuting to London and other areas incredibly easy.

Offered unfurnished and available now.

Additional Photos

