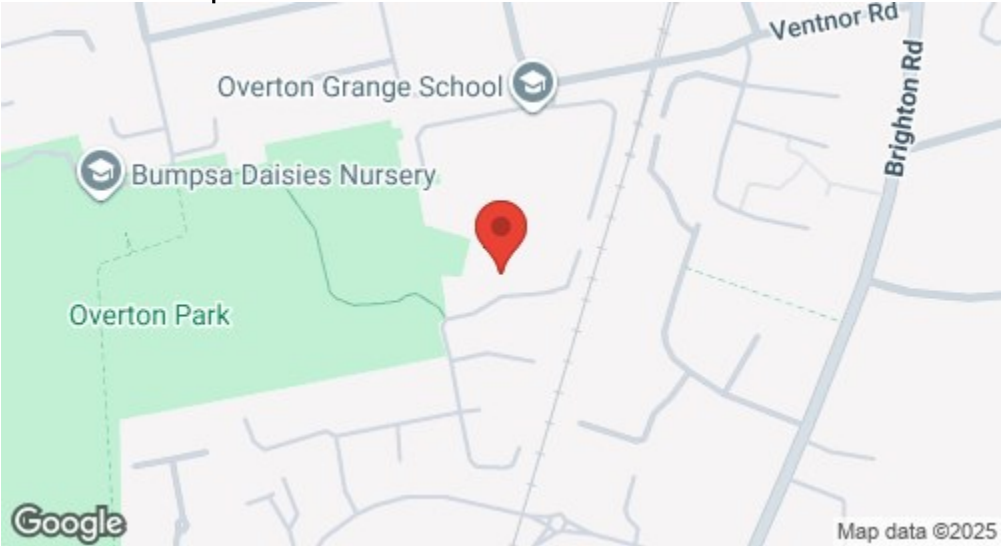
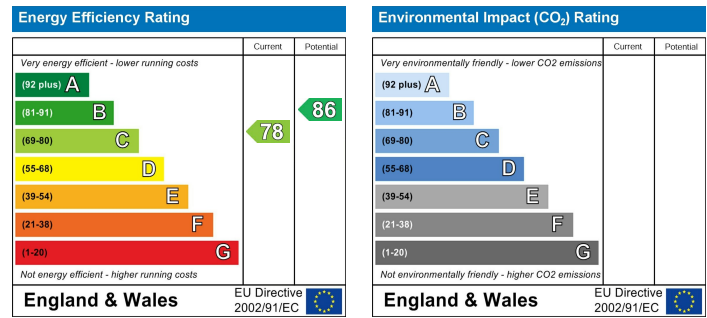


Location

Location Map



EPC Graph



Important Note

Centro Residential Sales and Lettings limited have not tested any services, heating system, electrical system, appliances, fixtures and fittings, that may be included in this property and would advise interested parties to satisfy themselves as to their condition or investigating the presence of any deleterious materials.

Viewing: Strictly by appointment through:

CENTRO RESIDENTIAL SALES AND LETTINGS LIMITED

Tel: 020 8401 5000

E-mail: residential@centro.plc.uk

See a selection of our properties at www.centro.plc.uk

£1,200 Per Month - 16th August 2025

Chipstead Close, Sutton, SM2 6BE



Description

- One Bedroom
- First Floor
- Purpose Built
- Parking
- EPC Rating : C
- Council Tax Band : B



Features

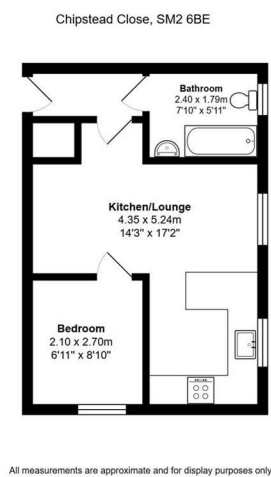
- Electric Heating
- Double Glazing
- Laminate Flooring

What you need to know

- Term: 12 months
- Rent: £1200pcm exclusive of bills
- Security deposit: £1384.00
- Council Tax Band: B
- Energy Rating: C



Floor Plan



For illustration purposes only



All dimensions and measurements are approximate and for guidance only.

Just Centro's Opinion...

A fantastic first floor one-bedroom apartment in a purpose built block, located within a popular development in Sutton. This lovely apartment comprises a bright lounge, kitchen with appliances, a double bedroom and a stylish bathroom.

Additional features include parking, storage space, electric heating, double glazing and neutral decor.

For transport links you are within walking distance to both Sutton and Belmont Stations.

Offered unfurnished and available now.

Additional Photos

