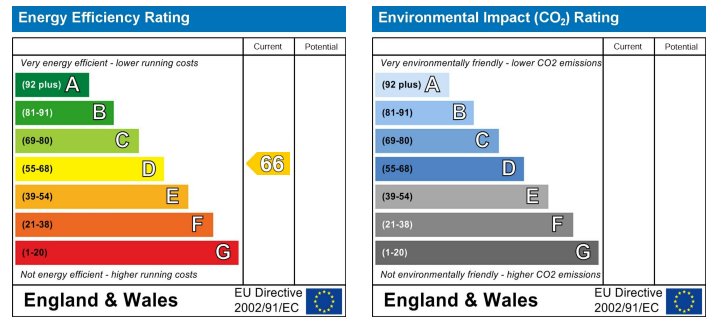


Location

Location Map



EPC Graph



Important Note

Centro Residential Sales and Lettings limited have not tested any services, heating system, electrical system, appliances, fixtures and fittings, that may be included in this property and would advise interested parties to satisfy themselves as to their condition or investigating the presence of any deleterious materials.

Viewing: Strictly by appointment through:

CENTRO RESIDENTIAL SALES AND LETTINGS LIMITED

Tel: 020 8401 5000

E-mail: residential@centro.plc.uk

See a selection of our properties at www.centro.plc.uk

£1,350 Per Month - 1st July 2025

Belmont Road, Wallington, SM6 8TE



Description

- Brand New Development
- 1 or 11 New Apartments
- First Floor
- Modern Kitchen
- New Shower Room
- Water and WIFI Included
- Furnished
- Couples and Students Welcome
- Council Tax Band A
- EPC Rating D

Features

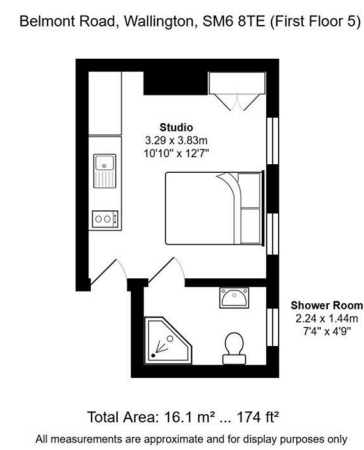
- Electric Heating
- Double Glazing
- Quality Furnishings

What you need to know

- Term: 12 months
- Rent: £1350pcm
- Security deposit: £1557.00
- Council Tax Band A
- Energy Rating: D



Floor Plan



Additional Photos



For illustration purposes only



All dimensions and measurements are approximate and for guidance only.

Just Centro's Opinion...

Stylish Studio Apartments - One of 11-Brand New Homes in the Heart of Wallington

Be the first to move into this beautifully designed studio apartment, part of an exclusive new development of just 11 homes in central Wallington. Each apartment offers a unique layout, with prices and sizes to suit different lifestyles and budgets.

Perfect for professionals, couples, or students, this fully furnished studio combines contemporary style with practical living:

- Comfortable double bed with storage underneath
- Large wardrobe, chest of drawers & plenty of storage
- Modern private kitchen (fridge, oven, microwave, two-ring hob, extractor fan, washer-dryer)
- Stylish en-suite with high-pressure rainfall shower

Residents also enjoy: