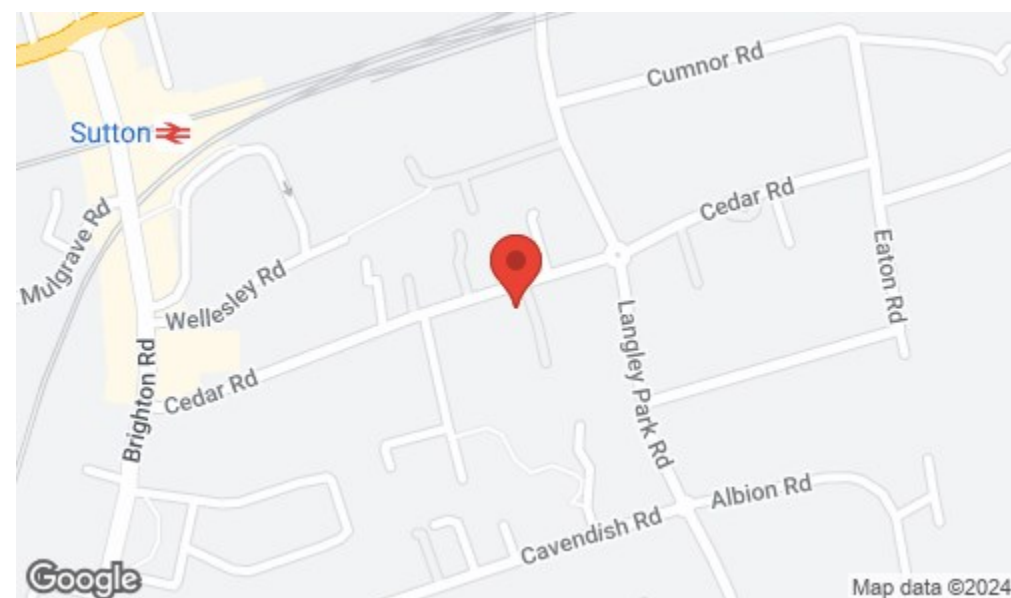


## Location

### Location Map



### Important Note

Centro Residential Sales and Lettings limited have not tested any services, heating system, electrical system, appliances, fixtures and fittings, that may be included in this property and would advise interested parties to satisfy themselves as to their condition or investigating the presence of any deleterious materials.

Viewing: Strictly by appointment through:

**CENTRO RESIDENTIAL SALES AND LETTINGS LIMITED**

Tel: 020 8401 5000

E-mail: [residential@centro.plc.uk](mailto:residential@centro.plc.uk)

See a selection of our properties at [www.centro.plc.uk](http://www.centro.plc.uk)

## £1,000 Per Month - Cedar Road, Sutton, SM2 5DG



### Description

- Studio Apartment
- Ground Floor
- Private Entrance
- Neutral Decor
- Furnished
- Garden Area
- Separate Shower-Room
- Separate Kitchen
- EPC Rating D
- Council Tax Band A

### Features

- Electric Heating
- Double Glazing
- Neutral Decor

### What you need to know

- Term: 12 months
- Rent: £1000pcm exclusive of bills
- Security deposit: £1153.00
- Council Tax Band A
- Energy Rating: D



## Accommodation

### Additional Photo



All dimensions and measurements are approximate and for guidance only.

#### *Just Centro's Opinion...*

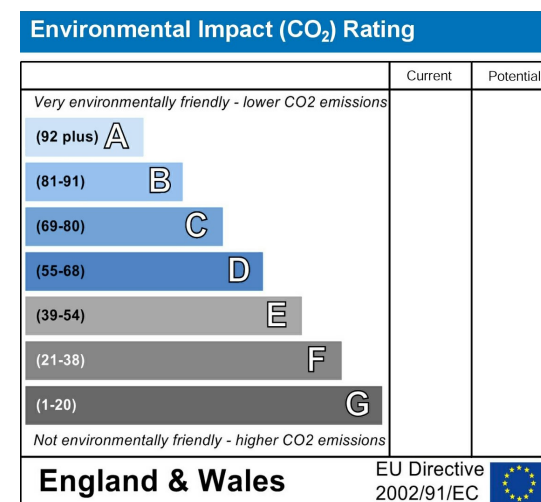
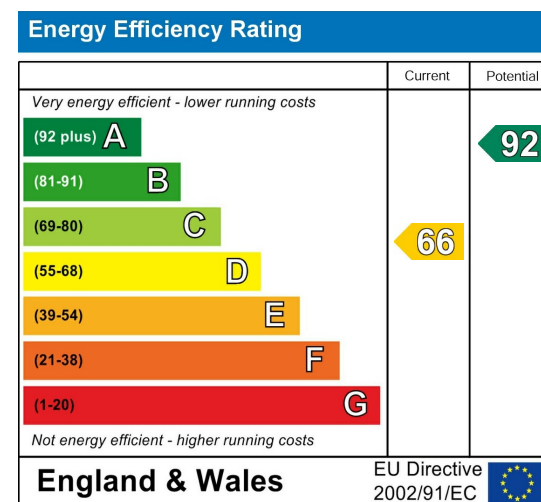
A well-presented Studio apartment with a private entrance located on the popular Cedar Road in Sutton which is walking distance to both Sutton High Street and Sutton Rail Station.

This ground-floor apartment offers you spacious living, a separate shower-room and a separate fitted kitchen with electric cooker, fridge and washing machine.

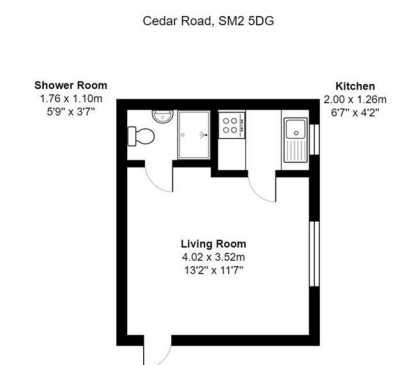
There is a grassed area directly outside your apartment which you have use of, electric heating, full double glazing, brand new carpets and neutral decor.

Offered furnished and available to view now.

### EPC Graph



### Floor Plan



All measurements are approximate and for display purposes only

For illustration purposes only