

## Location

### Location Map



### Important Note

Centro Residential Sales and Lettings limited have not tested any services, heating system, electrical system, appliances, fixtures and fittings, that may be included in this property and would advise interested parties to satisfy themselves as to their condition or investigating the presence of any deleterious materials.

Viewing: Strictly by appointment through:

**CENTRO RESIDENTIAL SALES AND LETTINGS LIMITED**

Tel: 020 8401 5000

E-mail: [residential@centro.plc.uk](mailto:residential@centro.plc.uk)

See a selection of our properties at [www.centro.plc.uk](http://www.centro.plc.uk)

**£1,850 Per Month -**  
Holly Lane East, Banstead, SM7 2BT



### Description

- Gated Development
- Two Bedrooms
- Two Bathrooms
- Private Balcony
- Beautiful Views
- Stunning Communal Grounds
- Allocated and Visitors Parking
- Unfurnished
- EPC Rating C
- Council Tax Band E

### Features

- Gas Central Heating
- Double Glazing
- Neutral Decor

### What you need to know

- Term: 12 months
- Rent: £1850pcm exclusive of bills
- Security deposit: £2134.00
- Council Tax Band E
- Energy Rating: C



## Accommodation

### Additional Photo



All dimensions and measurements are approximate and for guidance only.

#### *Just Centro's Opinion...*

A beautifully presented Two double bedroom purpose-built apartment set within the exclusive and gated Chatsworth Park development with stunning communal gardens and amazing views located walking distance to Banstead Village.

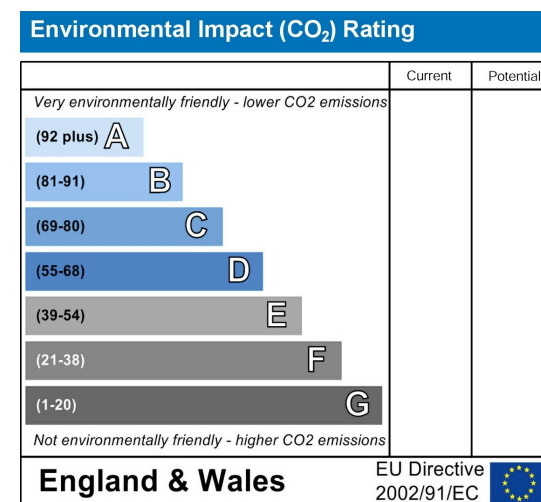
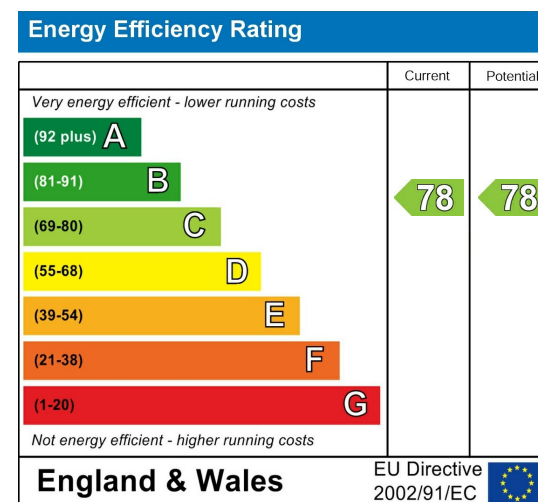
This first-floor apartments offers space, style and sophistication throughout, boasting two double bedrooms with the master bedroom offering an en-suite shower room and walk-in wardrobe. You have a fully fitted modern kitchen, family bathroom suite and a spacious lounge with a private balcony over-looking the grounds.

Other benefits include, allocated and visitors parking, gas central heating, double glazing and neutral decor.

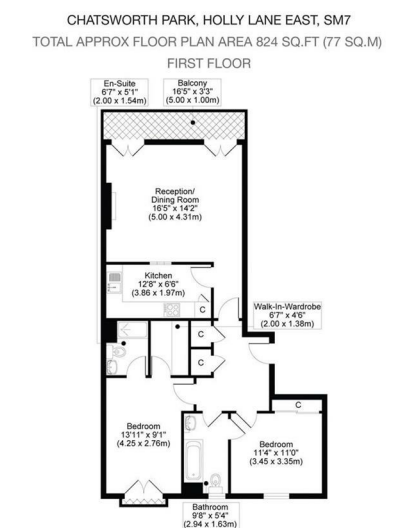
This lovely apartment needs to be seen, to avoid disappointment contact the lettings team today.

Offered unfurnished and available to view now.

### EPC Graph



### Floor Plan



All measurements, walls, doors, windows, fittings and their appliances, their size and locations are shown conventionally and are approximate only and cannot be regarded as being a representation either by the seller or his agent.

optic  
MEDIA  
opticmedia.co.uk

For illustration purposes only