

Location

Location Map



Important Note

Centro Residential Sales and Lettings limited have not tested any services, heating system, electrical system, appliances, fixtures and fittings, that may be included in this property and would advise interested parties to satisfy themselves as to their condition or investigating the presence of any deleterious materials.

Viewing: Strictly by appointment through:

CENTRO RESIDENTIAL SALES AND LETTINGS LIMITED

Tel: 020 8401 5000

E-mail: residential@centro.plc.uk

See a selection of our properties at www.centro.plc.uk

£2,100 Per Month -
Marlow Drive, Sutton, SM3 9BD



Description

- End Of Terrace
- Family Home
- Three Bedrooms
- Two Reception Rooms
- Summer House
- Driveway Parking
- Furnished or Unfurnished
- EPC Rating E
- Council Tax Band D

Features

- Gas Central Heating
- Double Glazing
- Neutral Decor

What you need to know

- Term: 12 months
- Rent: £2100pcm exclusive of bills
- Security deposit: £2423.00
- Council Tax Band D
- Energy Rating: E



Accommodation

Additional Photo



All dimensions and measurements are approximate and for guidance only.

Just Centro's Opinion...

A wonderful opportunity to rent this delightful three-bedroom end of terrace family home in Cheam located close to local amenities including shops, schools and transport facilities.

The property benefits from front and rear reception rooms with access to galley kitchen and ground floor cloakroom. The rear garden offers a summerhouse/workshop and additional storage shed. Upstairs you are presented with two double bedrooms, one single bedroom and the family bathroom.

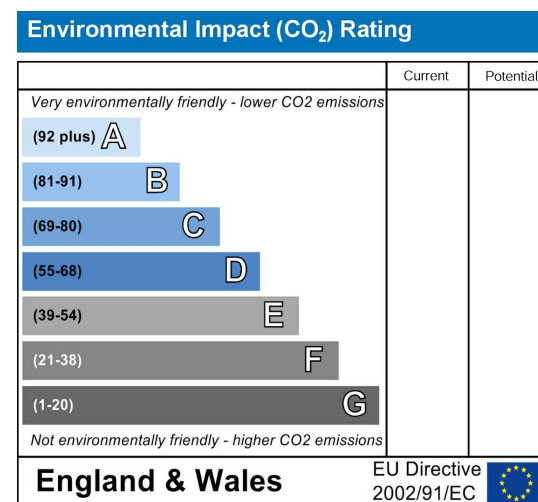
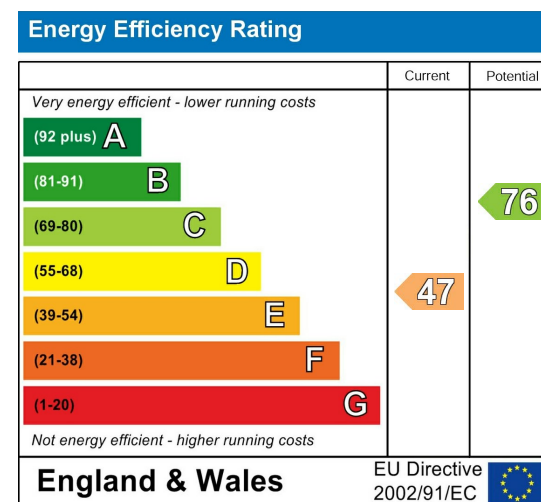
To the front of the property you have off road parking.

For Schools you have Cheam Park Farm Primary Academy, St Cecilia's Catholic Primary School and Brookfield Primary Academy all within walking distance.

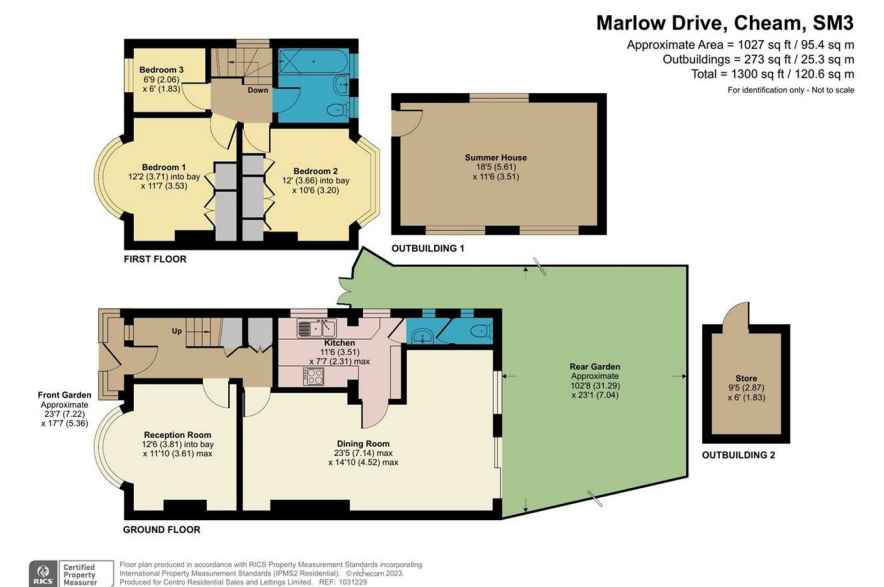
Offered Furnished or Unfurnished.

To arrange a viewing, call our experienced team today.

EPC Graph



Floor Plan



For illustration purposes only