



www.centro-pic.uk | Telephone 020 8401 5000
 www.christiesworld.com | Telephone 020 8643 7777

MAYFAIR OFFICE.CO.UK

onTheMarket.com

zoopla.co.uk

rightmove

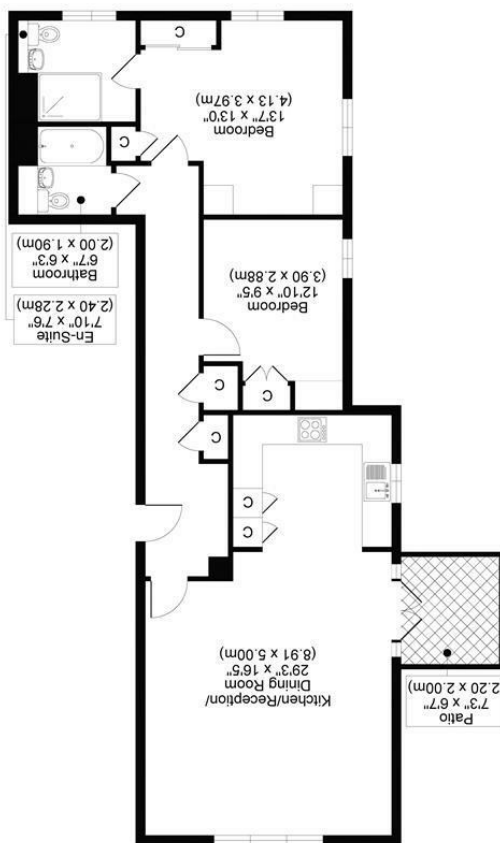
RICS

The Property Ombudsman

CHRISTIES

optica MEDIA optimedia.co.uk

All measurements, walls, doors, windows, fittings and their appliances, their size and locations are shown conventionally and are approximate only and cannot be regarded as being a representation either by the seller or his agent.



STEVENSON HOUSE, WYTHE MEWS, SM3
 TOTAL APPROX FLOOR PLAN AREA 927 SQ.FT (86 SQ.M)
 GROUND FLOOR



CHRISTIES



OFFERING A VERY RARE OPPORTUNITY TO PURCHASE A LARGE GROUND FLOOR TWO BEDROOM/TWO BATHROOM FLAT IN THE HEART OF CHEAM VILLAGE, THIS ATTRACTIVE AND GENEROUSLY PROPORTIONED PROPERTY ALSO BOASTS A HIGH LEVEL OF FINISH THROUGHOUT, A SECURITY ENTRY SYSTEM AND SECURE GATED PARKING. WITH CHEAM VILLAGE SHOPS AND STATION ONLY A FEW MINUTES' WALK AWAY THIS IS A CHANCE TO BUY AN IDEAL HOME IN AN IDEAL LOCATION. CALL US TODAY TO RESERVE YOUR VIEWING APPOINTMENT.

ANNUAL GROUND RENT £275.00
ANNUAL SERVICE CHARGES £2,000 AS PROVIDED BY PROPERTY OWNER.
LEASE 110 YEARS.

- IMPRESSIVE TWO BEDROOM /TWO BATHROOM GROUND FLOOR APARTMENT IN SOUGHT AFTER CENTRAL VILLAGE LOCATION
- LARGE AND WELL PLANNED ACCOMMODATION WITH A LIGHT AND AIRY FEEL
- OFFERED TO THE MARKET WITH NO ONWARD CHAIN
- COUNCIL TAX BAND D
- EPC RATING C

